

EPKER OSTEOTOM

slightly curved; graduated; 4.0mm

18.0cm (7.2")

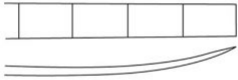
SKU: 114-561-04

Categories: [Open Surgery](#), [Rhinology](#)



ZUSÄTZLICHE INFORMATIONEN

UNIT	pcs.
TYPE	Osteotomes
KLS Martin	38-797-04
AUTHORS	EPKER
SPECIFICATIONS	curved



ZUSÄTZLICHE INFORMATIONEN

UNIT	pcs.
TYPE	Osteotomes
KLS Martin	38-797-04
AUTHORS	EPKER
SPECIFICATIONS	curved